



edpuzzle



Make any video your lesson

Engage every student • Reinforce accountability • Learn anywhere, anytime

What is Edpuzzle? It's easy and powerful!

Choose a video from YouTube or upload your own.

Record **audio-notes** and **add assessment** to pause playback, and you can even **prevent skipping**.

Track student progress and give instant feedback.



Crop out unnecessary intros and outros.



Record audio notes to add a familiar voice



Add multiple choice & open-ended questions.

How is Edpuzzle used?

In Class

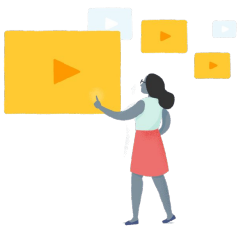


Self-Paced and Rotations

Students work independently.

Questions keep them on track, and offer *immediate feedback*.

Teacher can see who's watching and who might need some extra help.



"Live" Mode

Teacher plays the video, as students respond to questions on their device.

Display answers & spark discussion.

No more passive group video – Get 100% student participation!



At Home

Homework and Review

Assign video with assessment, and *increase homework completion*.

Re-assign lessons to give students a visual study guide for exams.

Parents love watching with their kids!

Flipped Classroom

Introduce concepts & terms at home.

Prevent skipping & embed questions to hold students accountable.

Check responses before class and *use class-time to the fullest!*

Analytics for differentiation

When teachers assign Edpuzzle videos for students to watch at their own pace, they'll get data showing student responses and the number of times each section of the video was viewed, making it easy to differentiate instruction.



Align your curriculum

On your School and District channels, teachers can share video lessons with one another and work more efficiently. Collaborate through Edpuzzle to deliver the same high-quality content throughout your district!

Ready to learn more?

Visit our Resources Page:

<http://edpuzzle.com/resources>

Enroll in Edpuzzle's self-paced online certification & professional development courses:

<https://go.edpuzzle.com/OnlinePD.html>

